

PWS &
INSTALLATIONS
Premier Water Solutions 10 Ltd

NEXUS TWIN PUMP STATION



NEXUS PUMP STATION APPLICATIONS

Suitable for sewage and surface water installations, the Nexus is ideally suited to large domestic or commercial and industrial applications.

- Large domestic
- Hotels & holiday properties
- Office and commercial
- Large sewage water applications
- Large surface water applications

PRODUCT OVERVIEW

The Nexus pump station is a powerful, twin pump system that is designed to collect foul water from properties where waste facilities in the property discharge via gravity.

A common application would be for the collection of foul sewage water originating from a domestic or commercial property.

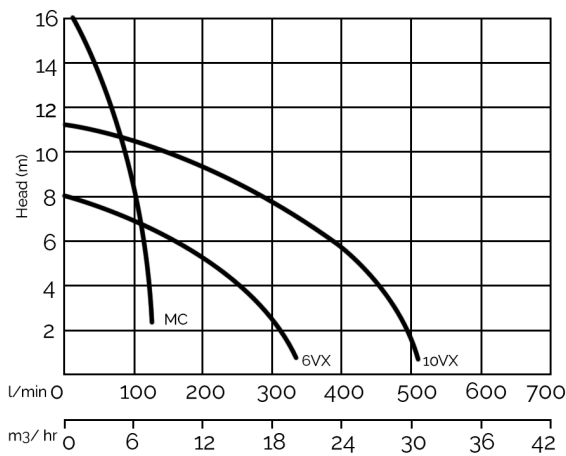
The Nexus Twin pump station has been designed to ensure a quick and easy installation.

The station allows for one or two 110mm inlets, which are to be drilled on site. The inlet seals come with the chamber and are supplied loose.

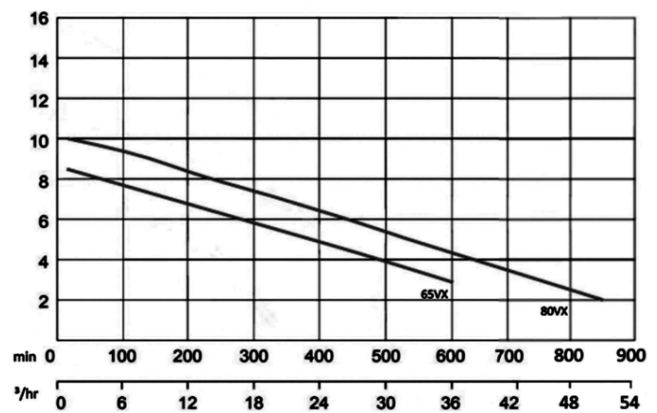
The system comes complete with your chosen pump, all internal pipework, valves, a pedestrian rated cover and frame, cable duct, and control panel with high-level alarm.



PUMP CURVES



PUMP CURVES



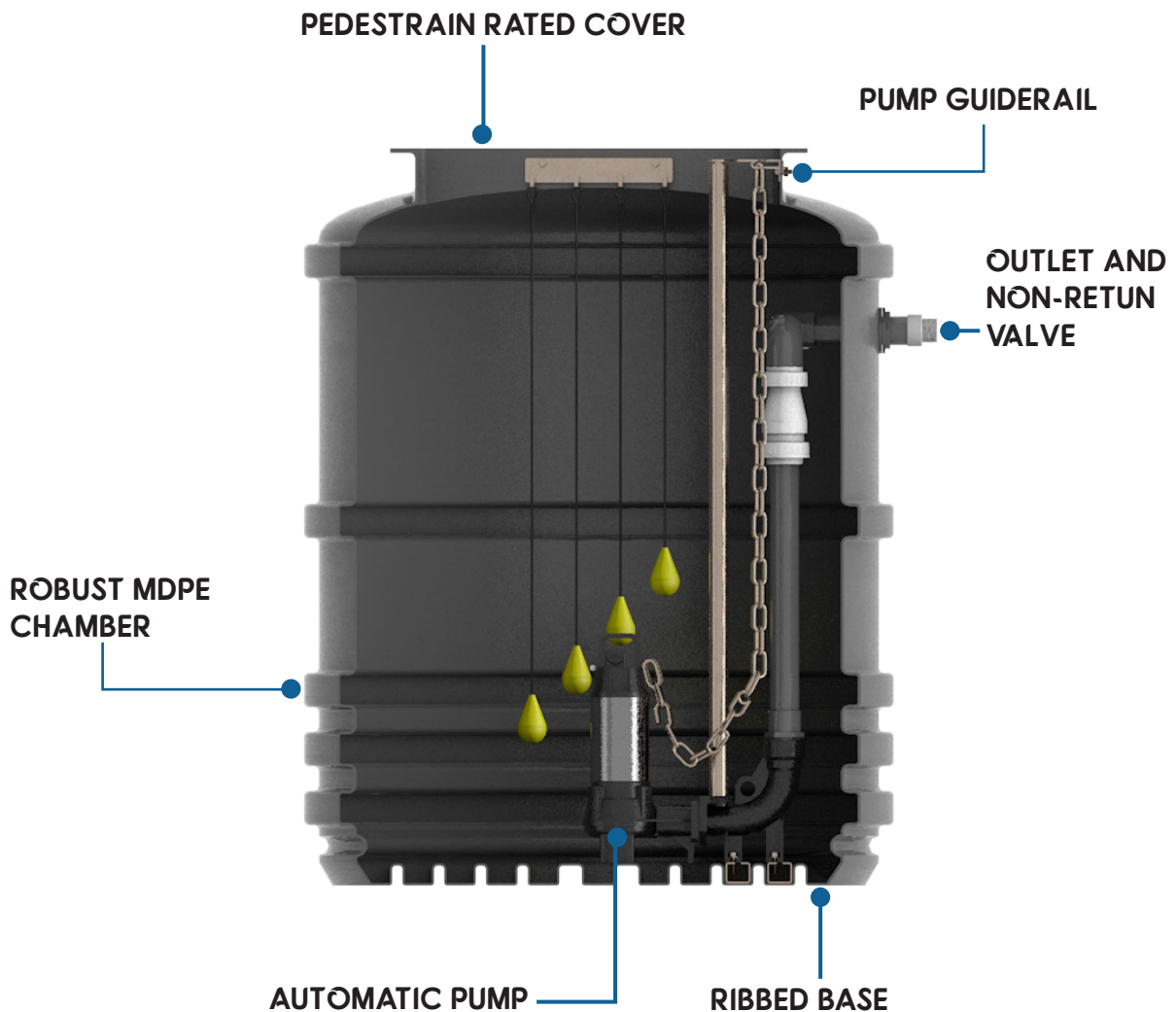
CHAMBER SPECIFICATIONS

Chamber Dimensions & Capacity			Access Cover Details		Construction	
Diameter	Height	Capacity	Diameter	Rating	Material	Base
1200mm	1500mm	1600L	600 x 750 mm	Pedestrian	Galvanised Steel	Steel Reinforced
1200mm	2000mm	2400L	600 x 750 mm	Pedestrian	Galvanised Steel	Steel Reinforced
1200mm	2500mm	2800L	600 x 750 mm	Pedestrian	Galvanised Steel	Steel Reinforced
1200mm	3000mm	3300L	600 x 750 mm	Pedestrian	Galvanised Steel	Steel Reinforced
1500mm	1500mm	2600L	900 x 900 mm	Pedestrian	Galvanised Steel	Steel Reinforced
1500mm	2000mm	3500L	900 x 900 mm	Pedestrian	Galvanised Steel	Steel Reinforced
1500mm	2500mm	4400L	900 x 900 mm	Pedestrian	Galvanised Steel	Steel Reinforced
1500mm	3000mm	5200L	900 x 900 mm	Pedestrian	Galvanised Steel	Steel Reinforced

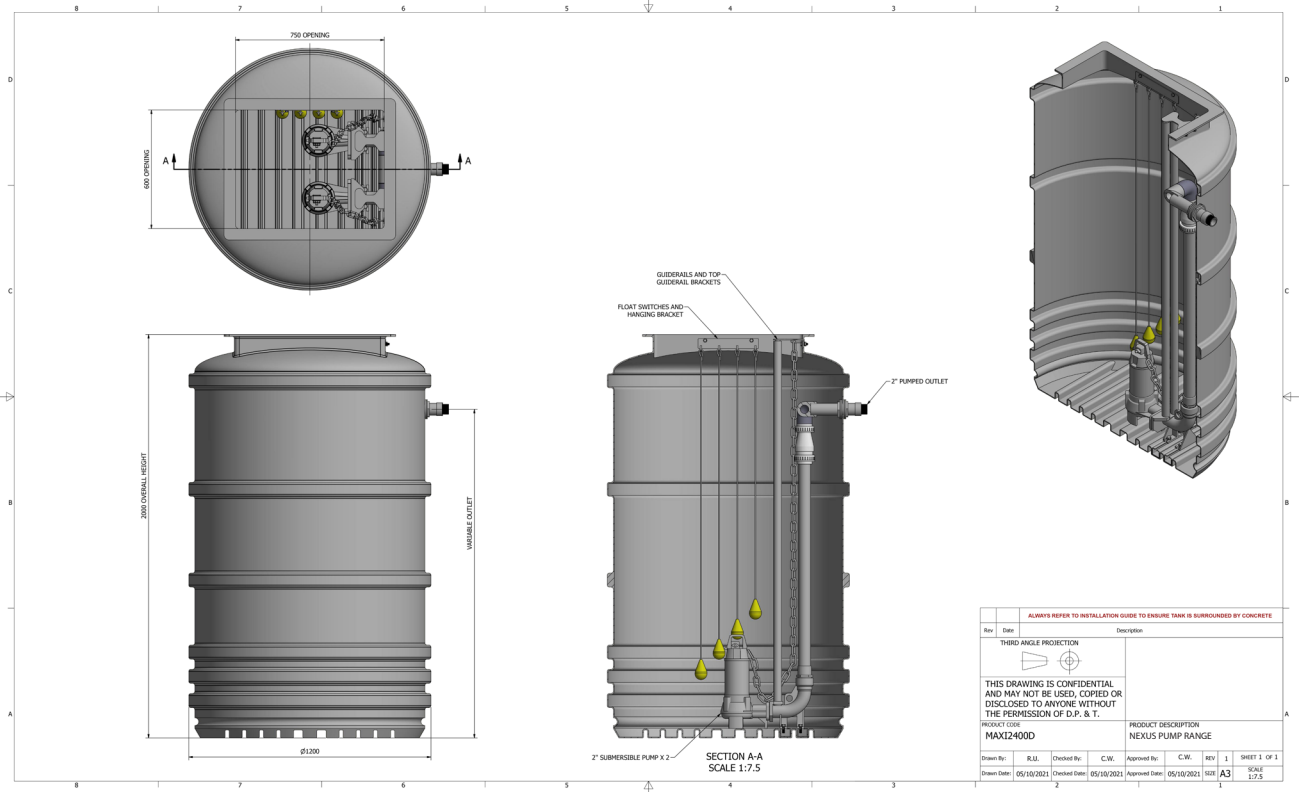
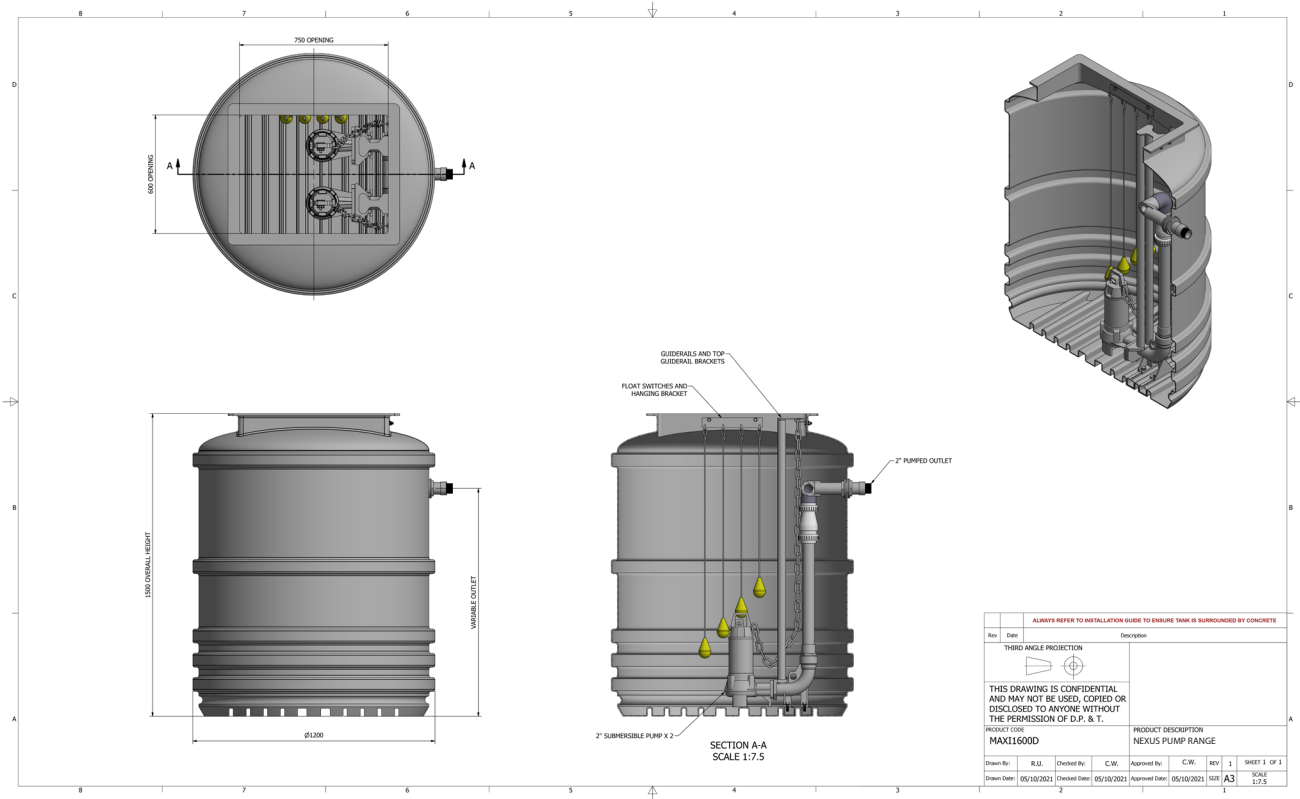
PUMP CURVES

Model Ref	6VX	10VX	MC	65VX	80VX	Options
Impeller Type	Vortex	Vortex	Macerator	Vortex	Vortex	Additional pumps are available beyond our standrd range shown in this table. Please contact a member of or sales team so sizing for your specific project requirements. Tel: 0115 9444474 Email: admin@premierwatersolutions.co.uk
Power Supply	230 ~ 1ph ~ 50Hz					
Rated Power	0.3kW	0.75kW	1.2kW	1.5kW	1.5kW	
Rated Current	1.9A	4.0A	9.3A	12.0A	12.0A	
Max Head	6 Meters	10 Meters	16 Meters	8 Meters	10 Meters	
Max Flow Rate	5.5 l/s	7.9 l/s	1.8 l/s	10 l/s	14 l/s	
Cable Length	10 Meters	10 Meters	10 Meters	10 Meters	10 Meters	
Free Passage	50mm	50mm	Macerator	65mm	80mm	
Pipework Size	63mm	63mm	63mm	90mm	90mm	

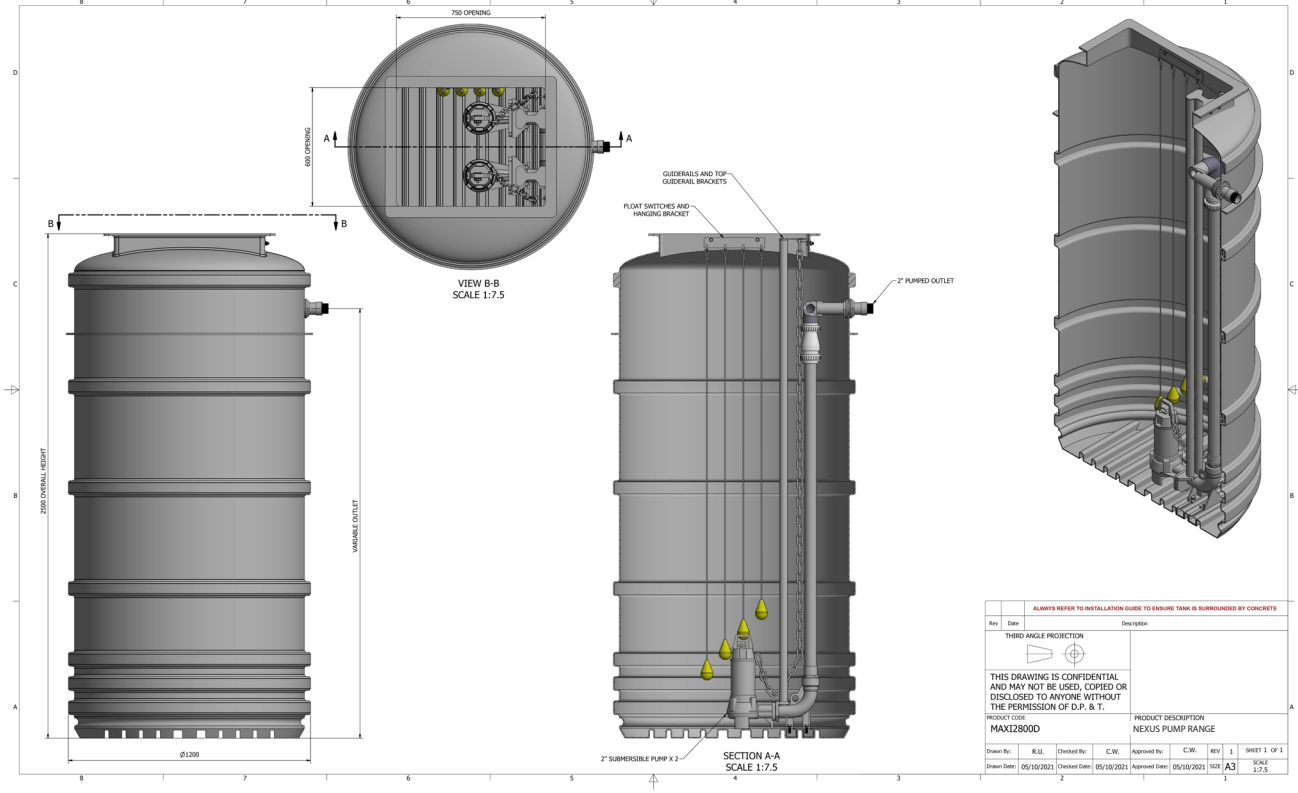
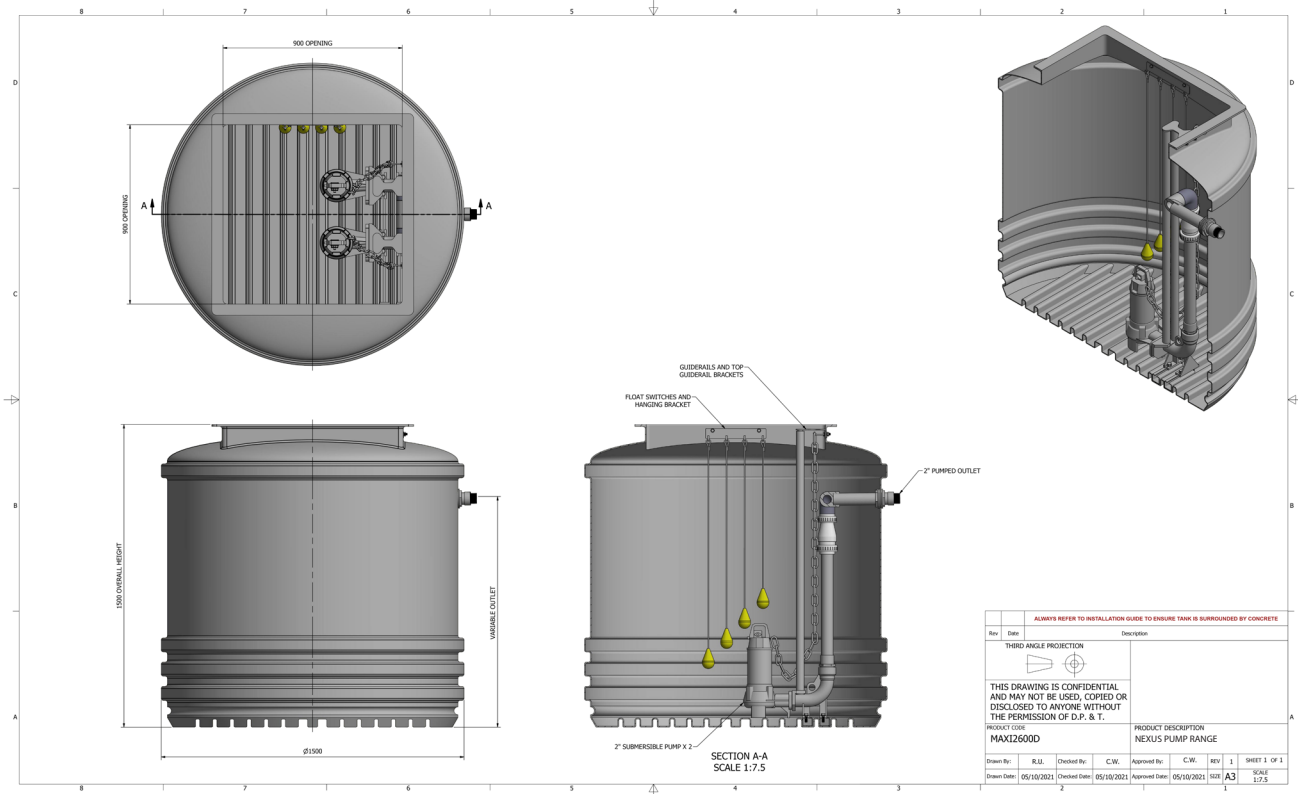
SYSTEM BREAKDOWN



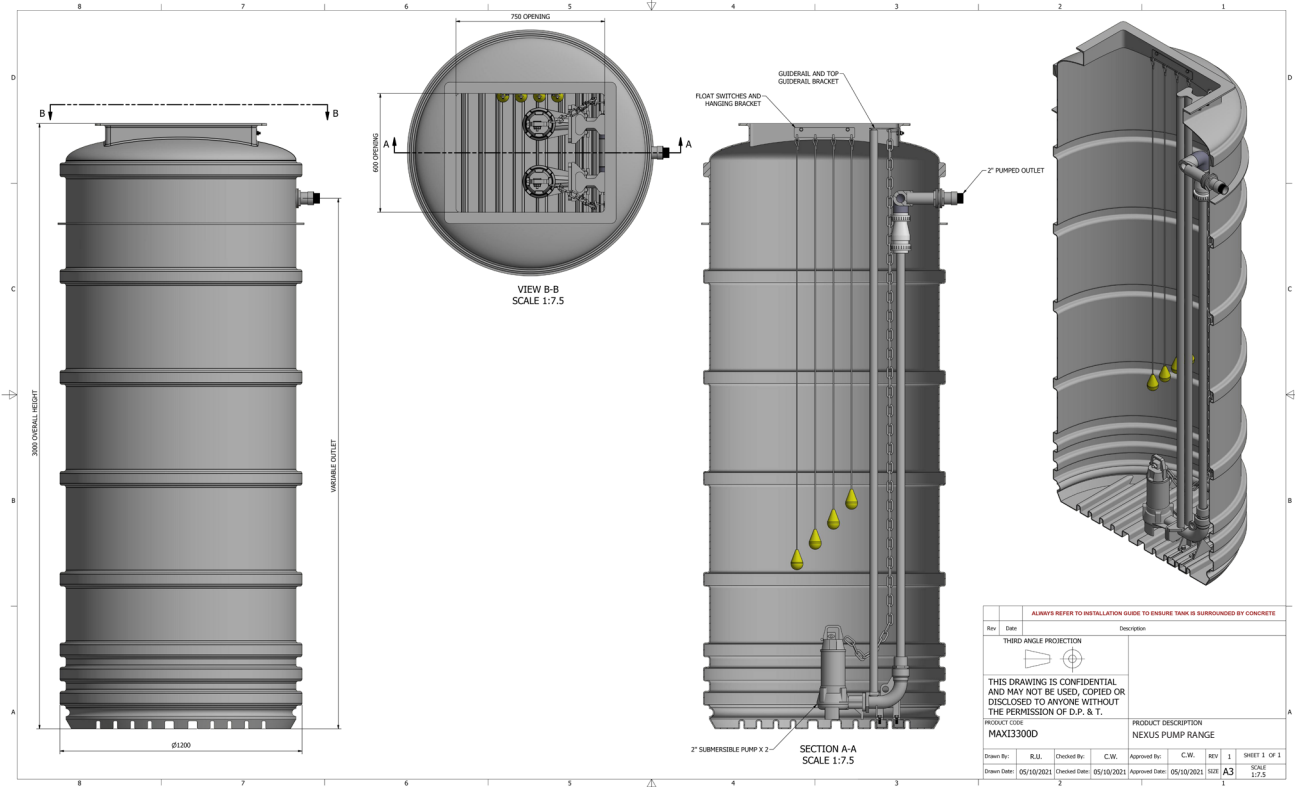
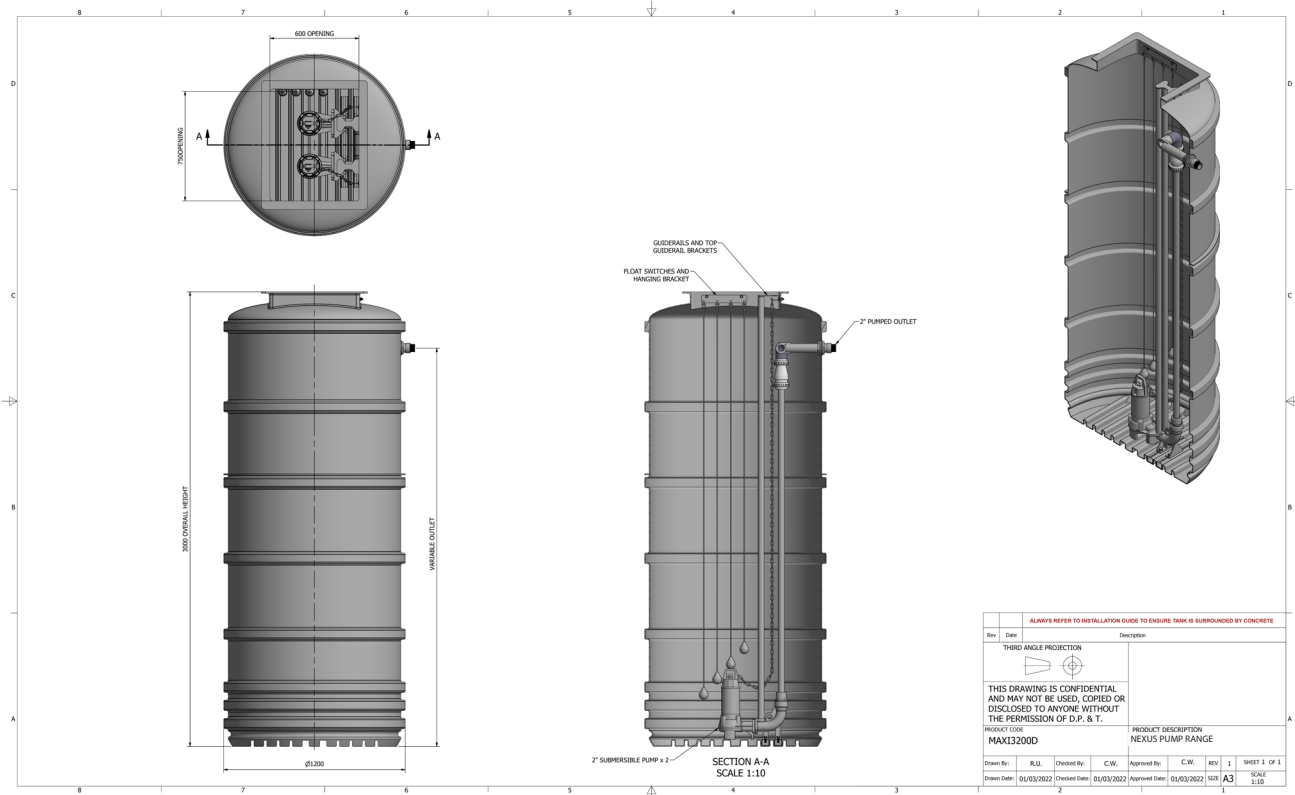
PRODUCT DRAWINGS



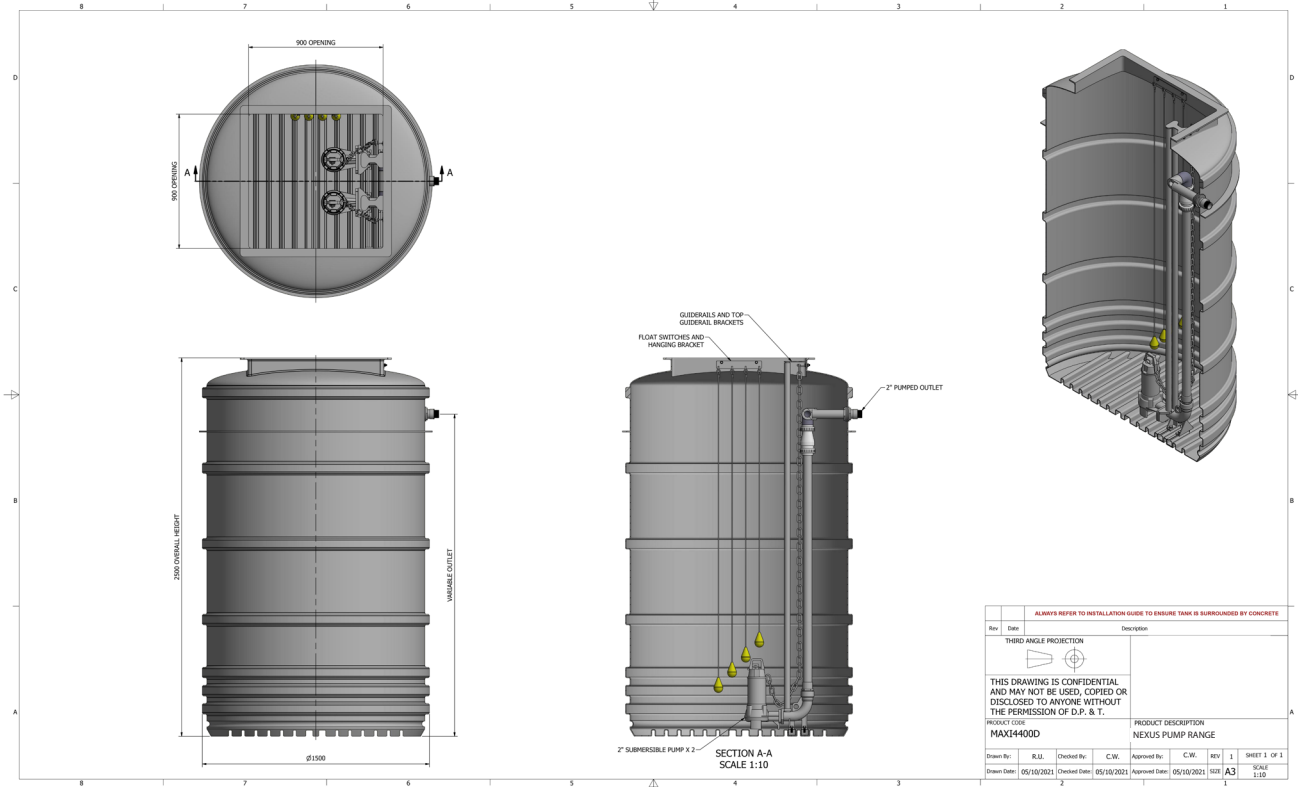
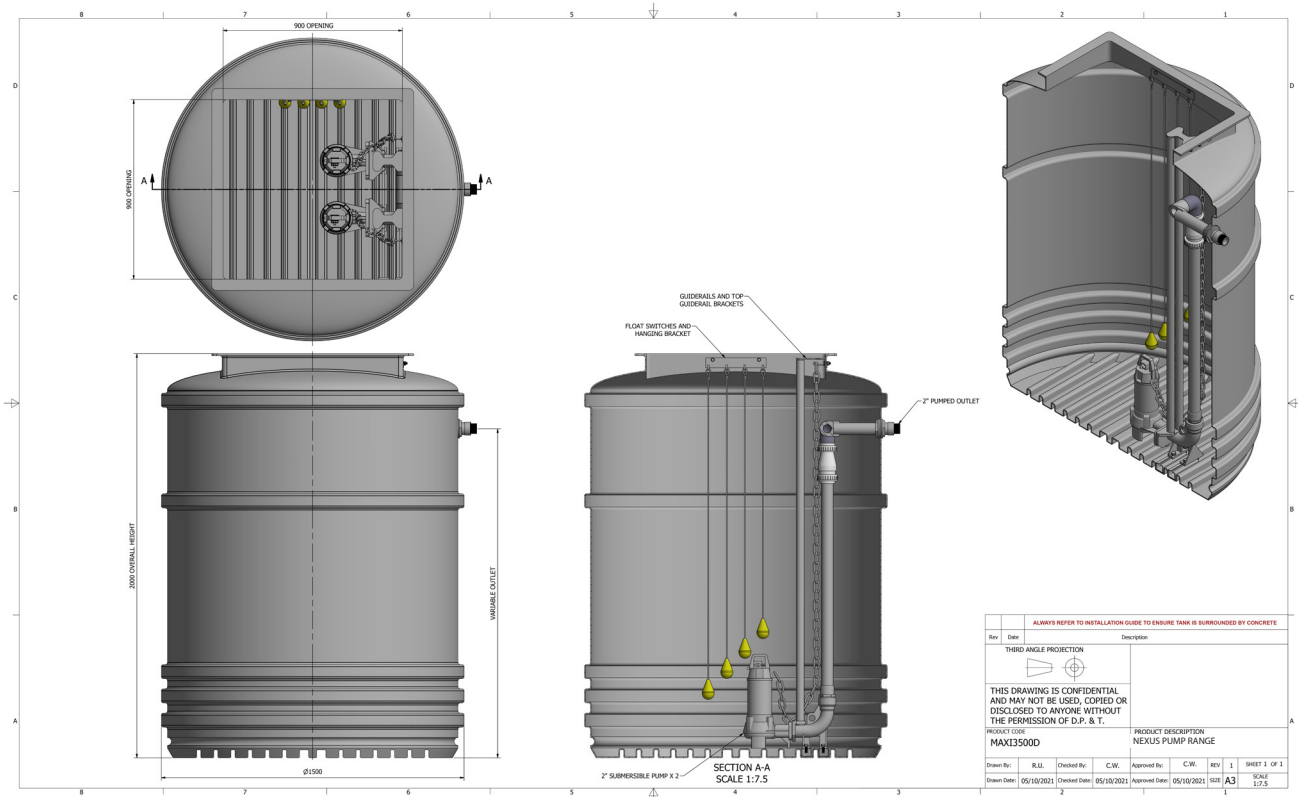
PRODUCT DRAWINGS



PRODUCT DRAWINGS

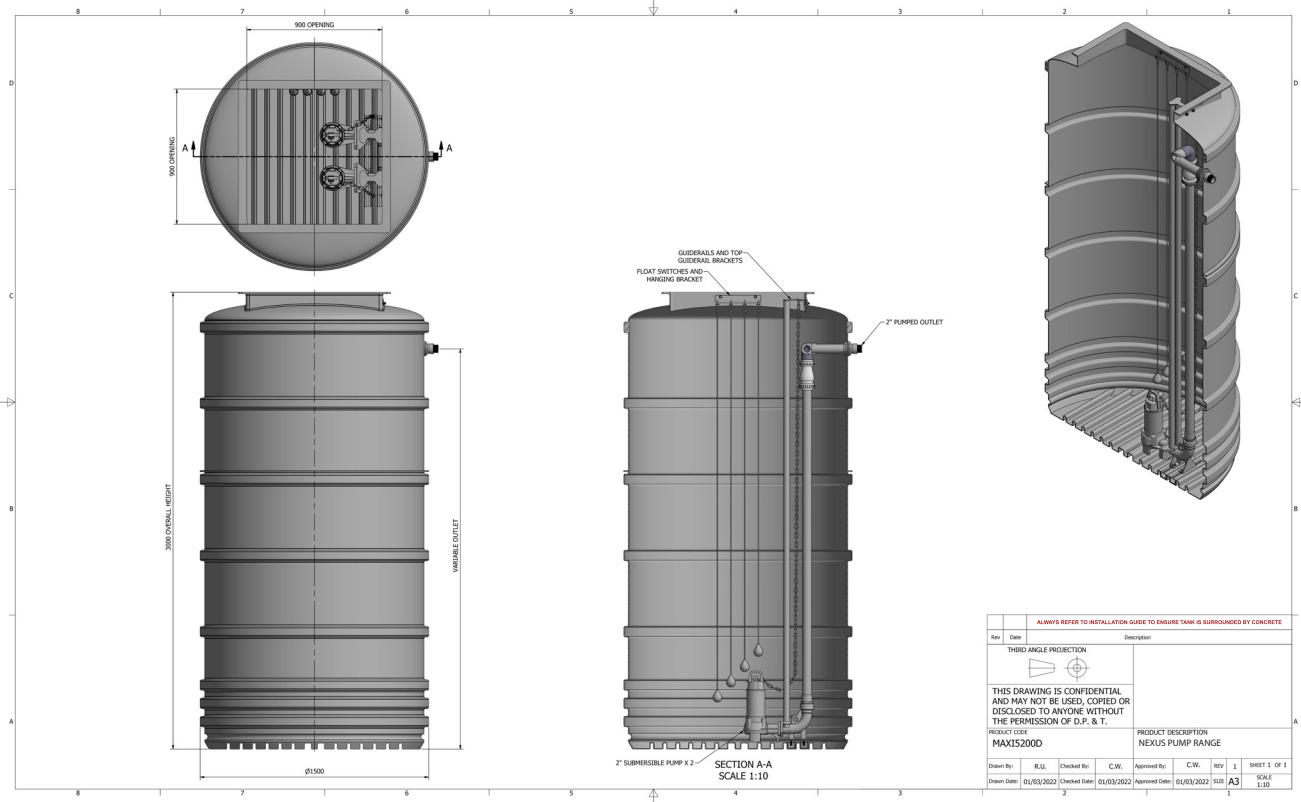


PRODUCT DRAWINGS



NEXUS TWIN PUMP STATION

PRODUCT DRAWINGS





PWS &
INSTALLATIONS
Premier Water Solutions 10 Ltd